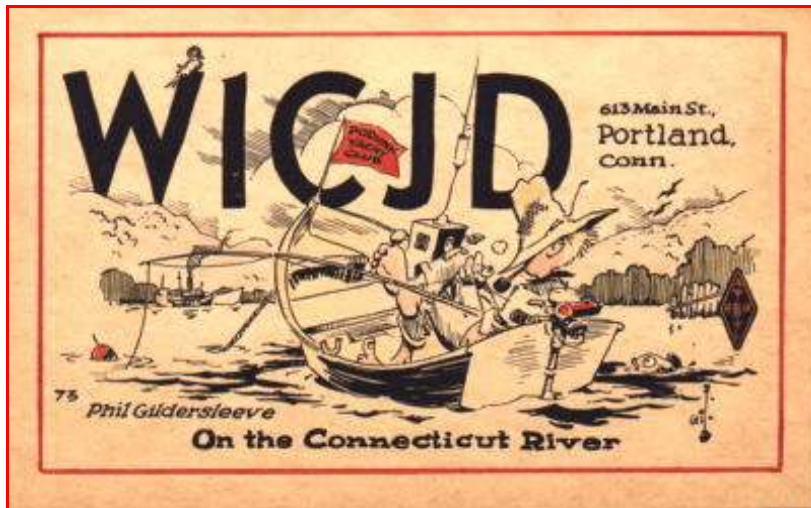


Philip Gildersleeve 1ANE - W1CJD *1908-1966* Artist and press official. Creator of the Podunk Hollow Amateur Radio Club! With pictures of Where's Waldo type satire sprawling over the page, depicting the idiosyncrasies of a group of radio enthusiasts getting together, the well known Jeeves Cartoons - Phil drew hundreds of cartoons for the ham radio operator's magazine QST.



He was a ham's ham himself and had worked as a radio operator on merchant ships. He held various radio licenses since the age of 16 and won several awards for high speed radio telegraphic reception. He could transmit 60 words per minute in Morse code!

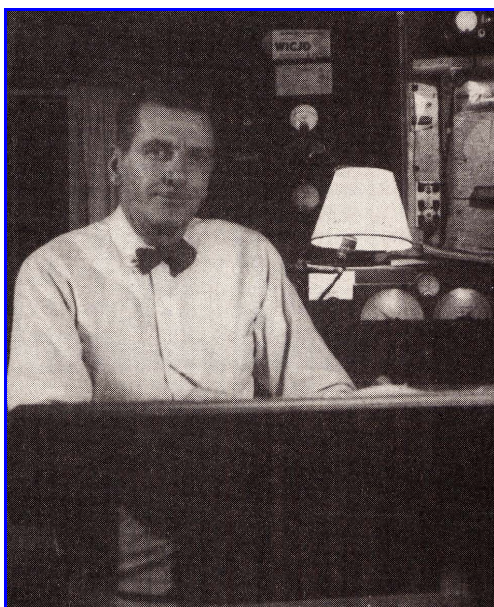
Gildersleeve entered the press industry for Middletown Connecticut Press as Portland CT correspondent in 1940. He became county editor in 1943, then city editor in 1945. Some time later he was named news editor. His cartoons also decorated the Press and various trade

journals as well. He served in the volunteer fire company and was captain of Fire Co.2 for nine years. He was on the Board of Education for 8 years and served as a vestryman for Trinity Church.

Phil was chairman of Portland's 125th anniversary celebration and drew the seal for the history written by Wm Van Bynum. The original had his initials in the lower left corner and "1841-1966 Portland Conn." above the picture. Phil's unique design shows his own personal place in history as his ancestors were in the boat building industry.



He created the town seal mere months before his death. After Phil's untimely death in 1966 QST published an entire book of his cartoons, entitled Gil; A Collection of Classic Cartoons from QST.



Phil's seal pulls together a surprising number of elements of historical Portland. Foremost is an old time oxen driver with his team, pulling a large brownstone sling. The greater part of Portland's 19th century wealth came from the brownstone industry. To the left of the oxen is a small building like those visible in old pictures of the quarries. Its tall chimney is smoking, connoting industry. To the right is another such building atop the quarry wall, with a pulley for lowering things into the quarry.

Gil's talent of the 1930's style reminiscent of Gasoline Alley, Felix the Cat or the Katzenjammer Kids have caught our eye at various times of our lives. It has caught the eye of our good Page owner/operator www.w8jyz.com - It is apparent that Gil designed QSL cards for others, we find them occasionally which are highly sought after. (Gil's Cartoon Service, W. Hartford, CT) circa 1934 Partially scripted from Dorris Sherrow August 2000. W8SU 2007 added 2020